

Public Document Pack

Working with communities to improve the quality of life for all in Argyll and Bute

www.argyllandbutecpp.net



24 February 2011

**BUTE AND COWAL AREA COMMUNITY PLANNING GROUP – TUESDAY, 1 MARCH 2011
CASTLE HOUSE, CASTLE GARDENS, DUNOON - 1:30 PM.**

I enclose herewith items on the Agenda for the above meeting.

SUPPLEMENTARY REPORT

- 4. RATIONALISATION / PARTNERSHIP LINKAGES TO LOCAL AREA
COMMUNITY PLANNING GROUP - ARGYLL & BUTE COUNCIL, GOVERNANCE
AND LAW(Pages 1 - 16)**
- 5. BUTE & COWAL AREA COMMUNITY PLANNING GROUP PROGRESS REPORT
- ARGYLL & BUTE COUNCIL, GOVERNANCE AND LAW(Pages 17 - 20)**
- 6. BUTE & COWAL LOCAL AREA COMMUNITY PLANNING GROUP AREA PLAN -
ARGYLL & BUTE COUNCIL, GOVERNANCE AND LAW(Pages 21 - 22)**
- 11. UPDATE FROM THEMATIC GROUPS - ARGYLL & BUTE COUNCIL,
GOVERNANCE AND LAW**
Environment
Social Affairs
Economy (Pages 23 - 28)

This page is intentionally left blank

**Argyll and Bute Community Planning
Partnership**

**Bute and Cowal Local Area Community
Planning Group**

Date: 1st March 2011

argyll and bute
communityplanningpartnership



Title: Update Report on Rationalisation/Partnership Linkages to LACPG

1. SUMMARY

- 1.1** This report summarises progress which has been made in making linkages of Strategic Local Partnerships to the Bute and Cowal Local Area Community Planning Group.

2. RECOMMENDATIONS

- 2.1** That the Local Area Community Planning Group note the progress which has been made, and agree that this work should remain a standing item for consideration at future meetings of the Group.

3. BACKGROUND

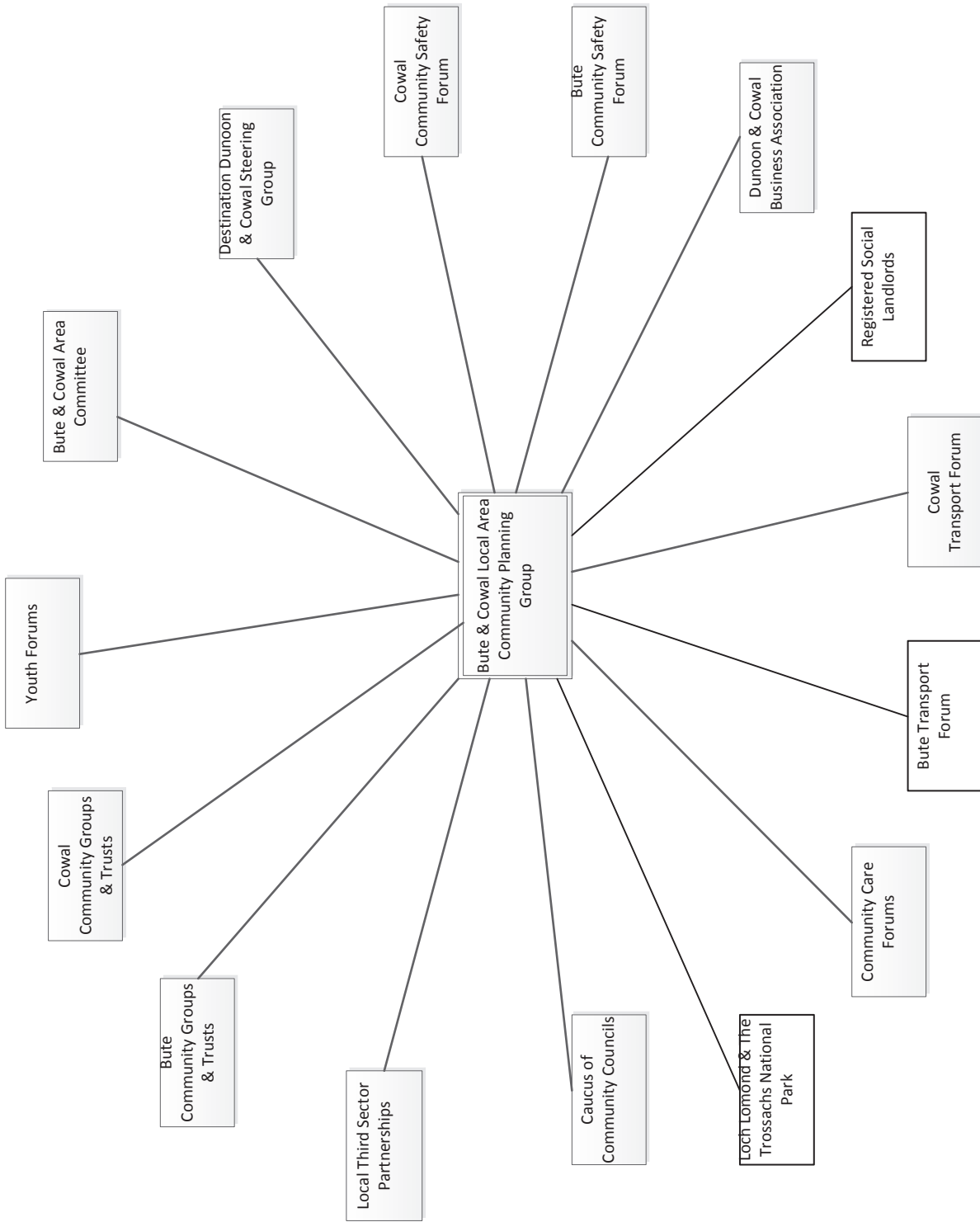
- 3.1** At its meeting in January 2011 the Bute and Cowal Local Area Community Planning Group noted the need for effective linkages of local partnerships, who are frequently the deliverers of key local outcomes contained in the developing LACPG plans, to be made to the LACPG. This work has been progressed, and the attached document shows the developing partnership structure which is currently in place. It should be noted that the information contained in this draft document relates only to information submitted to date by partners in the group, and there may well be other key partnerships in the area which should be included in the exercise.
- 3.2** It remains the case that as a result of the work in aligning partnerships there may be some rationalisation of these groups at local level.
- 3.3** The Group is asked to consider the information submitted, and to make recommendation on which partnerships they feel need to be represented at each LACPG meeting, and, where there is duplication of groups and partners attending meetings at different levels of the LACPG structure, to make recommendation on how this should be rationalised.
- 3.4** Following this, the agreed process of Highlight and Exception reporting on key aims and outcomes will be introduced, giving the local groups the information they need to ensure that local priorities are, in fact, being progressed.

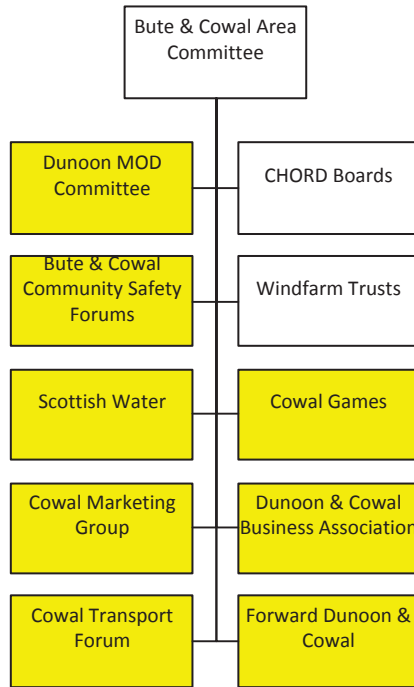
4. CONCLUSION

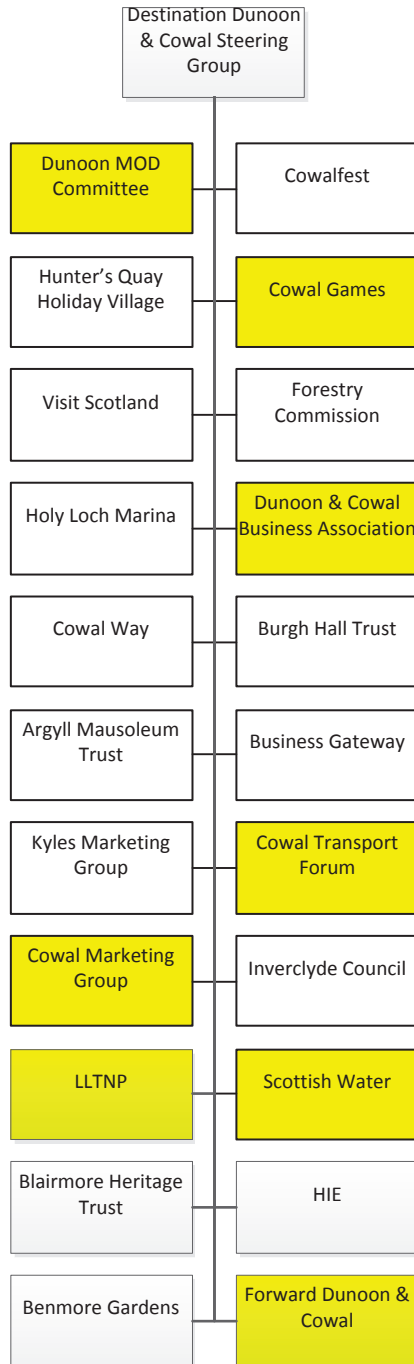
- 4.1** Work has been progressed in linking known local partnerships to the Local Area Community Planning Group, but this should remain as work in progress, to reflect ongoing local partnership arrangements which are subject to change. The Local Area Community Planning Group should consider where rationalisation of partnerships can be carried out to ensure more effective partnership working at a local level.

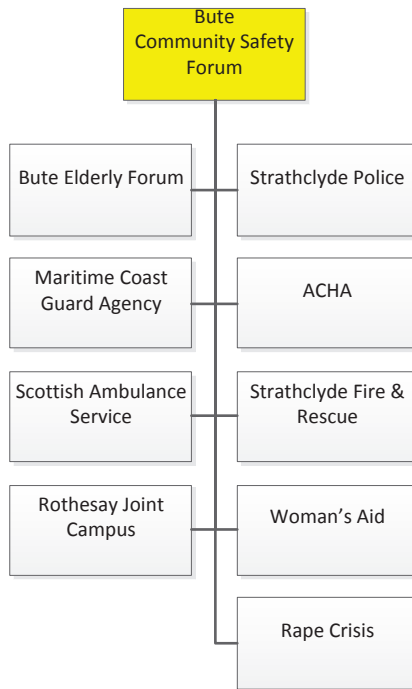
For further information contact: Shirley MacLeod, Area Manager,
Customer Services

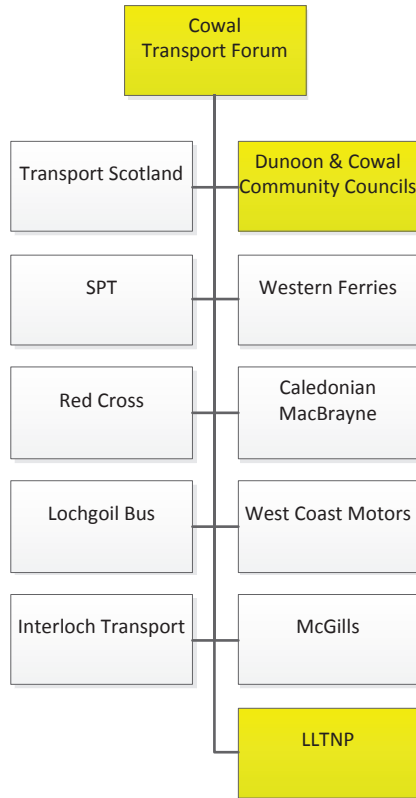
Telephone 01369 707130

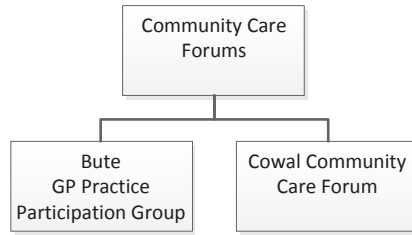




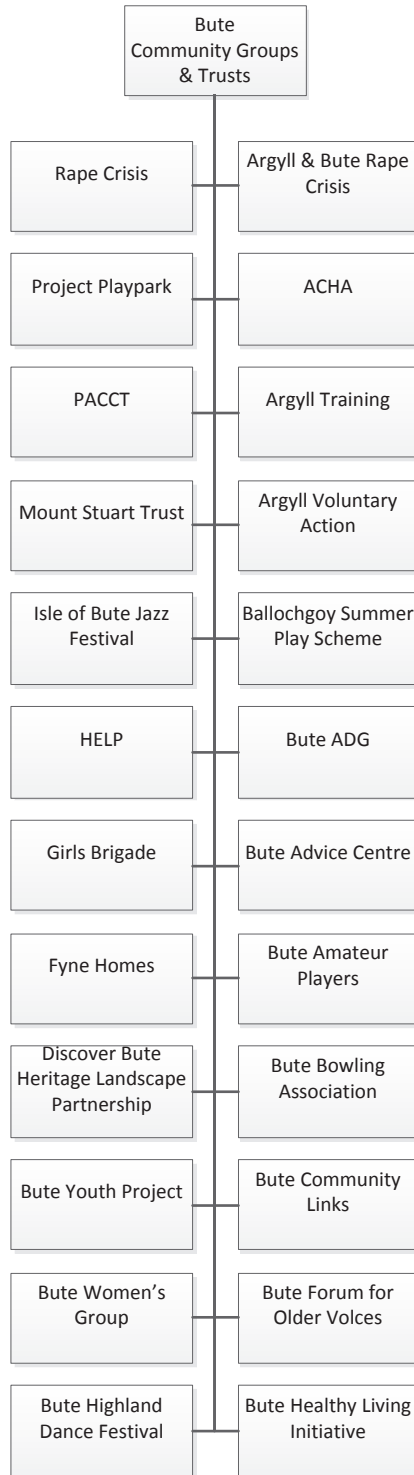






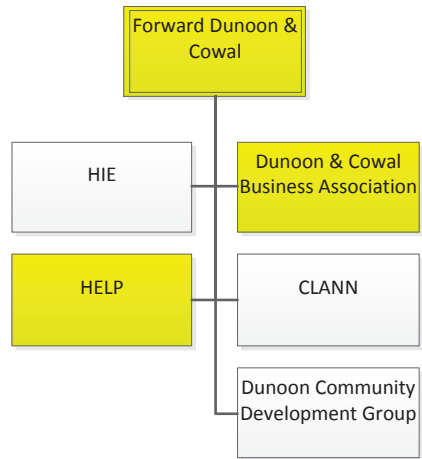








Youth Forums



This page is intentionally left blank

**Argyll and Bute Community Planning
Partnership**

**Bute and Cowal Local Area Community
Planning Group**

Date: 1st March 2011

argyll and bute
communityplanningpartnership



**Title: Progress Report on Bute and Cowal Community Planning Group
Action Plan and Scorecard.**

1. SUMMARY

- 1.1** This report summarises progress which has been made by partners in delivering the agreed Bute and Cowal Local Community Plan.

2. RECOMMENDATIONS

- 2.1** That the Local Area Community Planning Group note the progress which has been made by partners in financial year 2010/11 in delivering the agreed Local Community Plan for Bute and Cowal, and consider whether any amendments to the plan may be required. A revised scorecard which reflects the plan, as amended if necessary, will be submitted for consideration at the May LACPG meeting.

3. BACKGROUND

- 3.1** Group members and partners on the Bute and Cowal Local Area Community Planning Group agreed an action plan for delivery, which highlights agreed aims and objectives for the area, as developed in line with the CPP's Single Outcome Agreement, and following community consultation at the first Forward Together Event held in March 2010. Since the agreement of the plan, in May 2010, partners and lead organisations have been expected to deliver the actions assigned to them through that agreement process.
- 3.2** Appendix 1 contains the most recent updates for the action plan, which have been gathered from partners during February 2011. It shows progress to date, and also highlights current risks to completion of key aims and actions.
- 3.3** Group members will recall that as part of the Forward Together 2 Event held in October 2010, attendees were asked to identify local priorities which they felt should be increased or built upon, priorities which should be maintained, those which could be reduced, and those which could be stopped all together. This work was carried out in light of the financial situation which public sector

organisations expected to take effect from April 2011.

To summarise the outcomes of that event, the following were the top three priorities for each category:

What we need to do more of-:

1. Initiatives to attract and retain working age population
2. Effective partnership working
3. Integrated transport services.

What we need to maintain at current levels:

1. Town Centre Improvements- CHORD
2. Health and Wellbeing Projects
3. Joined up transport services.

What we could do less of (or just do differently to be more cost effective):

1. Better targeting of police resources
2. Better targeting of ferry services to when they are needed

What we could stop:

1. Neighbourhood watch
2. Healthy living initiative.

Additionally, participants raised the following topics which they felt should be included within the Local Area Community Plan:

1. The need to promote tourism in the area
2. The need to maintain services that are relevant to an ageing and aged population
3. The need to provide rape counselling services
4. Timetabling and ticketing issues with buses, but also the need to maintain subsidies
5. The need for sheltered and affordable housing

In light of these comments, and the comments made across Argyll and Bute in response to the Council's budget consultation exercise, group Members may wish to consider whether any amendments to the currently agreed Plan are required.

Following discussion and any amendment of this plan, it is intended that a revised Scorecard, which reflects the agreed Local Community Plan, and will enable the group to carry out ongoing effective scrutiny of local performance against agreed outcomes, will be discussed at the May LACPG meeting.

4. CONCLUSION

- 4.1** There has been some progress by partners in delivering the agreed actions and outcomes of the Bute and Cowal Local Community Plan, and this information is for noting. Following comments made at more recent consultation events partners may deem it necessary to amend the current plan to allow for effective delivery of local priorities in light of the current financial climate. A revised Scorecard will enable the group to carry out regular scrutiny of local performance against agreed outcomes.

For further information contact: Shirley MacLeod, Area Manager,
Customer Services

Telephone 01369 707130

This page is intentionally left blank

Bute and Cowal LACPG Area Community Plan

Full Area Summary

Unique Ref No	Area outcome	Actions to achieve outcome	Success measures	Key dates	Lead partner	Lead officer	Links with capital investment	What is the source of this outcome?	Risks	Updates	Risk level
BC01	Towns and Villages which are Centres of Economic Activity and have Strong Community Identity	Joint initiatives to attract and retain working age population to the area Encourage locals to shop locally through incentive schemes Carry out Town Centre improvements through TCRF and Leader Funding	Overall population for the area (from Small Area Population Estimates (SAPE)) Percentage working age population (age 16-65 from SAPE) TCRF Action Plan delivered	Annual Oct-10	ABC D&C Bus Association ABC	Brian Chennell Iain Welsh			<p>CPP-R06 Economic downturn - impact on regeneration projects</p> <p>CPP-R12 Low net inward migration of people of working age</p> <p>CPP-R13 Continued net out migration of young people</p> <p>CPP-R17 Reduced attractiveness of Argyll and Bute for investors</p>	<p>The Bid development is at early stage with Steering Group just formed, with a Manager having been recently appointed</p> <p>Public and business surveys will now be carried out, and projects to be established by Steering group in line with survey outcomes.</p>	
BC02	Transport Infrastructure and Services that are Good Quality, Well Co-ordinated and Support Easy Access to Services	CHORD process proceeds according to programme to identify opportunities to improve the fabric and facilities of Dunoon and Rothesay town centres Development of a Cowal Community Transport Forum (to complement the Bute Forum)	Dunoon Waterfront full business case complete Rothesay Pavilion full business case complete Rothesay TH1 successful Stage Two pass from HLF Efficacy Group in Place to Development of Local Transport Forum, Group Established 2010, Action Plan Developed, Number of Improvements to Rural Transport Provision.	Jan-12 Mar-11 Mar-11 Dec-10	ABC ABC ABC ABC	Nicola Debnam Rowan Simpson		<p>Covered by project risk register</p> <p>CPP-R07 Lack of investment in transport infrastructure</p>			
BC03	People Feel Strong, Safe and Secure in their Community	ROADS FERRIES Targeted Home Fire Safety Visits based on referral from partners of vulnerable people Joint action to improve road safety comprising: Targeted locations, where there is a history of speeding motorists, RTC resulting in serious and fatal injury. Engineering solutions in locations with long term, persistent history of complaints about speeding Education and support to alter driver behaviour Cross-generational Experiential Learning Events with partners in order to provide comprehensive community safety information	Road condition data for Bute and Cowal ????? Growth in Number of identified High Priority clients based on referrals Reduction in number of fatal and serious injuries resulting from RTCs Reduction in complaints from local residents Reduction in number of RTCs Increased Detection for Speeding Growth in number of Experiential Events supported Growth in number of attendees at events Increased geographical footprint of events	TBA	SFR SFR A & B Council SP/SFR/ABC SP/SFR/ABC SP/SFR/ABC SP/SFR/ABC SFR A & B Council	D McCaughy/ S MacLeod C1 Mosley/D Moya Ingram ABC C1 Mosley/D McCaughy/ Moya Ingram ABC C1 Mosley/D Moya IngramABC McCaughy D McCaughy/ S MacLeod		<p>CPP-R04 Impact of geography on outcomes for individuals</p> <p>CPP-R04 Impact of geography on outcomes for individuals</p>	<p>Divesate Partnership/Road Safety Unit</p>		

Unique Ref No	Area outcome	Actions to achieve outcome	Success measures	Key dates	Lead partner	Lead officer	Links with capital investment	What is the source of this outcome?	Risks	Risk level
BC03	People Feel Strong, Safe and Secure in their Community	Develop neighbourhood watch schemes Fully embrace the Community Policing Model and Public reassurance Strategy, putting officers in place at the right locations at the right time to offer public reassurance and reduce disorder. Provision of a 'Youth Café' within the Burgh Hall.	Number of new schemes implemented Measured through the public consultation questionnaire, reduced fear of crime and confidence in the police. Facility Provided and Operational		ABC SP Burgh Hall Committee, CLANN, Church of Scotland, SP NHS	CI Mosley V Smith				
		Development of Anticipatory Care Plans Joint action targeting drug supply comprising intelligence gathering Work with housing associations to evict people supplying drugs Shop-a-Dealer initiative in partnership with the community and local schools	Top 1% of vulnerable persons have plans in place Detections for drug supply Number of successful eviction orders	In place	SP SP	CI Mosley CI Mosley		OPP-R06 Increase in drugs misuse		
		Effective Therapeutic Interventions applied at early stage Joint action on alcohol comprising: Target areas of public drinking within the boundary of the bye law and enforce available legislation Target premises suspected to be selling alcohol to young people Target individuals acting as agents to purchase alcohol for young people Work in partnership through the Pub Watch Scheme encouraging information exchange about individuals known to cause disorder in premises	Number of persons detected for public drinking (short term = increase, medium term = reduction) Number of detections for selling alcohol to young people Number of persons detected for acting as agents Number of exclusions from licensed premises		CADF SP SP SP	CI Mosley CI Mosley CI Mosley CI Mosley				
BC04	People Feel Healthier and have Access to Services Appropriate to their Needs	Widening access to support and advice which is provided by the third sector .	Mapping exercise to ascertain groups in place Mental Health Implementation Group leading on this. Electronic directory developed and available Ways identified to replicate Bute Hill model Number of active play area partnerships in place Number of subsidised uses taking place		NHS NHS NHS	V Smith V Smith		OPP-R04 Impact of geography on outcomes for individuals OPP-R14 Demographic changes impacting on service demand and resources OPP-R15 Changing Government policy impacting on service demand OPP-R18 Delay to redesign of services for older people and impact on delayed discharges OPP-R19 Delay to redesign of mental health services OPP-R20 Delay to modernisation of NHS services		
		Joint projects which will result in increased health and well being for the community Development of Play Area Partnerships Subsidised access to Leisure Facilities for Vulnerable Persons			ABC / NHS ABC / NHS	Alison McIlroy V Smith / J Anderson		4 Council owned and managed play areas in BAC-2 have partnership agreements, £141,000 brought to play areas from external funding.		

**Argyll and Bute Community Planning
Partnership**

**Management Committee
Date: 02 February 2011**



Environment Thematic Group Update Report

The Environment Theme Group has not met since the last Management Committee meeting. However the Partners are continuing with their scrutiny of the Theme group measures with a view to refining them and making them more relevant to the performance reporting of the Community Plan.

The next Environment Theme group meeting will be on the 24th of February where amongst other business SNH will report on its re-organisation and its aims and objectives within Argyll and Bute.

For further information contact: Andrew Campbell, SNH

Telephone 01546 60

This page is intentionally left blank

**Argyll and Bute Community Planning
Partnership**

**Management Committee
Date: February 2010**



Social Affairs Thematic Group Update Report

1. SUMMARY

1.1 This report summarises the continued progress made by the Social Affairs Thematic Group.

2. RECOMMENDATIONS

2.1 That the Management Committee note the progress made by the Social Affairs Thematic Group.

3. BACKGROUND

3.1 Over the past year the group has made progress in a number of areas including the development of performance scorecards, Community Plan priorities for 2009-13 and engaged with a number of external groups to raise and scrutinise social affairs within Argyll and Bute. The initial priority focussed in on finalising administrative arrangements culminating in the finalisation of the Partnership Agreement and mapping of partnership groups linking to the Thematic Group.

3.2 The Social Affairs Thematic scorecard was further developed by the group to focus on outcomes, developing more relevant measure of performance, targets founded on solid baseline and benchmarking data to meet the group's aim – 'Argyll and Bute to be a place where people can be supported to lead healthy, safe, independent and fulfilling lives'.

3.3 Performance measures agreed for the revised scorecard include; attainment – SQA examinations, % of older people receiving Care in the Community, % of children affected by disability receiving Community Based Support, anti social offences recorded, number of extracurricular sport opportunities for schools and more homes, less homelessness.

3.4 Consideration was given to joint performance within Argyll and Bute, looking on an area by area basis at joint performance in relation to Delayed Discharges, Balance of Care for Older People,

Integrated Occupational Therapy Services, Integrated Learning Disability Service and Integrated Substance Misuse Services.

- 3.5** Simon Steer, Head of Community Care Integration – NHS Highland gave the group a very informative presentation on the Integrated Resource Framework (IRF) pilot for health and social care in November of last year. The IRF project is part of the Shifting the Balance of Care agenda and supports the Community Plan 2009-13 priority to plan our services based on local need.
- 3.6** Scrutiny of both the Renewable Energy Action Plan (REAP) and The Health Improvement Planning and Performance Action Group (HIPAG) highlight and exception reports contributed to the awareness and knowledge of social affair issues within Argyll & Bute and provided forums for discussion on such issues.
- 3.7** The priorities for the group going forward into 2011 will be:
- Improving the reporting and dissemination of progress from the linked partnership groups
 - Integration/ rationalisation of partnership groups
 - Improved scrutiny of partner performance
 - The promotion of joint working initiatives in pursuit of thematic group objectives

4. CONCLUSION

- 4.1** Further work is required to support the priorities as set out in the Community Plan 2009-13, however considerable progress has been made by the group with regard to setting out its key performance measures and addressing and scrutinising social affairs within Argyll and Bute.

For further information contact:

Cleland Sneddon
Executive Director – Community Services
Argyll and Bute Council

Tel: 01546 604112

**Argyll and Bute Community Planning
Partnership**

**Management Committee
2 February 2011**



1. SUMMARY

1.1 This report summarises the work planned by the Economy Thematic Group to implement actions in the Community Plan and develop a scorecard and work programme

2. RECOMMENDATION

2.1 That the Management Committee notes the planned actions

3. BACKGROUND

3.1 No meeting has been held since the December Management Committee. The next meeting of the Thematic Group will be held on 23 February when the plan for 2011 will be agreed.

3.2 A short life working group will meet on 25 January to review the current scorecard data and discuss any changes required to make the process more effective. They will present recommendations to the Thematic Group at the next meeting

4. CONCLUSION

4.1 The Economy Thematic Group continues to work towards developing and implementing the actions in the Community Plan. Concern about membership of the group and representation at meetings will be addressed during 2011.

For further information contact: Douglas Cowan
douglas.cowan@hient.co.uk

Telephone 01546 605402

This page is intentionally left blank